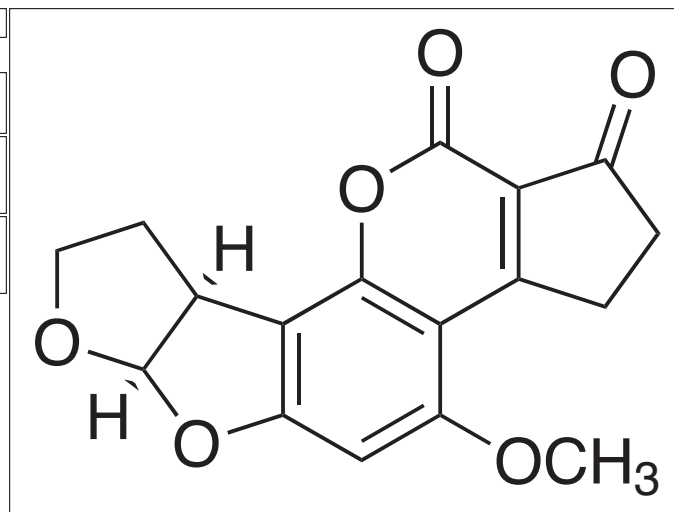




**LKT Laboratories, Inc**  
2233 University Avenue West  
St. Paul, Minnesota 55114 USA  
Ph: 651.644.8424 Fax: 651.644.8357  
www.lktlabs.com info@lktlabs.com

# Product Information

|                            |   |
|----------------------------|---|
| <b>CAS No.</b>             | 7220-81-7   |
| <b>Product ID</b>          | A2046   |
| <b>Product Name</b>        | Aflatoxin B2  |
| <b>Chemical Name</b>       |   |
| <b>Synonym</b>             |   |
| <b>Formula</b>             | C <sub>17</sub> H <sub>14</sub> O <sub>6</sub>  |
| <b>Formula Wt.</b>         | 314.229   |
| <b>Melting Point</b>       | 286.0-289.0 °C  |
| <b>Boiling Point</b>       |   |
| <b>Purity</b>              |   |
| <b>Solubility</b>          |   |
| <b>Stability</b>           |   |
| <b>Store Temp</b>          |   |
| <b>Ship Temp</b>           |   |
| <b>Product Description</b> | A potent hepatoxin and hepatocarcinogen found in poorly stored grains and nuts. Chronic exposure is shown to produce mutagenesis necrosis and liver carcinogenesis. |
| <b>References</b>          | Phillips, T., Tox. Sci. (52 Suppl), 118-126 (1999).<br>Daniels JM, Liu L, Stewart RK, Massey TE. Carcinogenesis. 5: 823-827 (1990).                                 |



## Pricing

|      |          |
|------|----------|
| 1 mg | \$76.20  |
| 5 mg | \$369.60 |
|      |          |
|      |          |
|      |          |
|      |          |

**Bulk quantities available upon request**

## LKT Laboratories, Inc.

Address: 2233 University Ave. W.  
St. Paul, MN 55114  
USA

Phone: 888-LKT-LABS (558-5227)  
651-644-8424

Fax: 651-644-8357

Email: info@lktlabs.com

Web: www.lktlabs.com

**Caution:** This product is intended for laboratory and research use only. It is not for human or drug use.