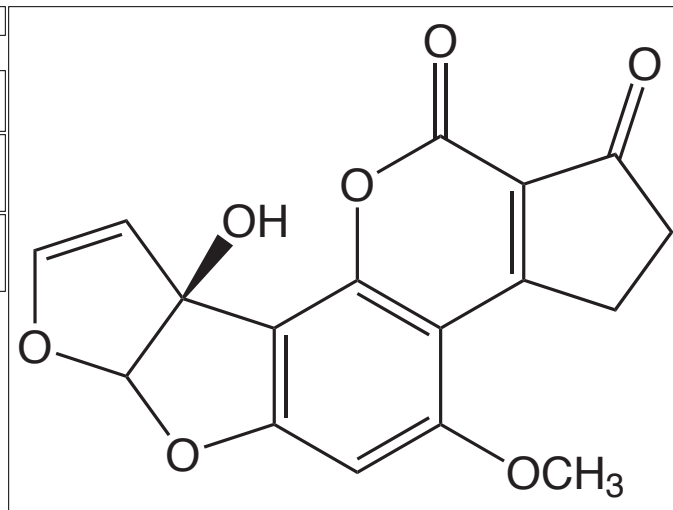




**LKT Laboratories, Inc**  
2233 University Avenue West  
St. Paul, Minnesota 55114 USA  
Ph: 651.644.8424 Fax: 651.644.8357  
www.lktlabs.com info@lktlabs.com

# Product Information

<b>CAS No.</b>	6795-23-9
<b>Product ID</b>	A2052
<b>Product Name</b>	Aflatoxin M1
<b>Chemical Name</b>	
<b>Synonym</b>	
<b>Formula</b>	C <sub>17</sub> H <sub>12</sub> O <sub>7</sub>
<b>Formula Wt.</b>	328.27
<b>Melting Point</b>	
<b>Boiling Point</b>	
<b>Purity</b>	
<b>Solubility</b>	
<b>Stability</b>	
<b>Store Temp</b>	
<b>Ship Temp</b>	
<b>Product Description</b>	A potent hepatotoxic mycotoxin metabolite of Aflatoxin B1. Often found in milk of cattle fed on AfB1 contaminated feed. Exhibits cytotoxic activities.
<b>References</b>	Neal G, Eaton D, Judah D, Verma A. Toxicol Appl Pharmacol. 151: 1582-8 (1998).



## Pricing

100 µg	\$60.50
1 mg	\$353.90

**Bulk quantities available upon request**

## LKT Laboratories, Inc.

Address: 2233 University Ave. W.  
St. Paul, MN 55114  
USA

Phone: 888-LKT-LABS (558-5227)  
651-644-8424

Fax: 651-644-8357

Email: info@lktlabs.com

Web: www.lktlabs.com

**Caution:** This product is intended for laboratory and research use only. It is not for human or drug use.