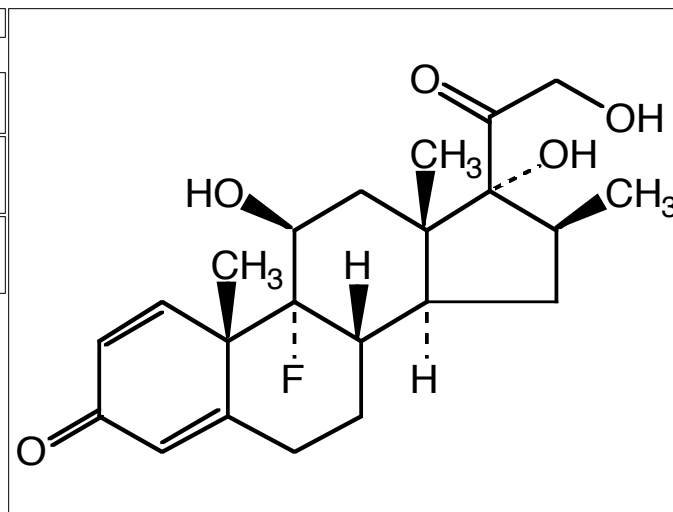




**LKT Laboratories, Inc**  
2233 University Avenue West  
St. Paul, Minnesota 55114 USA  
Ph: 651.644.8424 Fax: 651.644.8357  
www.lktlabs.com info@lktlabs.com

# Product Information

<b>CAS No.</b>	378-44-9
<b>Product ID</b>	B1876
<b>Product Name</b>	Betamethasone
<b>Chemical Name</b>	(11 $\beta$ ,16 $\beta$ )-9-Fluoro-11,17,21-trihydroxy-16-methylpregna-1,4-diene-3,20-dione
<b>Synonym</b>	Becort; Betnelan; Celestene; Dermabet; Diprolene; Visubeta
<b>Formula</b>	C <sub>22</sub> H <sub>29</sub> FO <sub>5</sub>
<b>Formula Wt.</b>	392.46
<b>Melting Point</b>	231°C -234°C (dec.)
<b>Boiling Point</b>	
<b>Purity</b>	≥98%
<b>Solubility</b>	Insoluble in water.
<b>Stability</b>	
<b>Store Temp</b>	+4 deg C
<b>Ship Temp</b>	
<b>Product Description</b>	Betamethasone is glucocorticoid that induces gene expression and apoptosis.
<b>References</b>	Hofmann TG, Hehner SP, Bacher S <i>et al.</i> <i>FEBS Lett.</i> <b>441</b> :441-6 (1998). Kalthoff FS, Chung J, Musser P <i>et al.</i> <i>Clin Exp Immunol.</i> <b>133</b> :350-9 (2003).



## Pricing

100 mg	\$138.00
500 mg	\$448.40

**Bulk quantities available upon request**

## LKT Laboratories, Inc.

Address: 2233 University Ave. W.  
St. Paul, MN 55114  
USA

Phone: 888-LKT-LABS (558-5227)  
651-644-8424

Fax: 651-644-8357

Email: info@lktlabs.com

Web: www.lktlabs.com

**Caution:** This product is intended for laboratory and research use only. It is not for human or drug use.