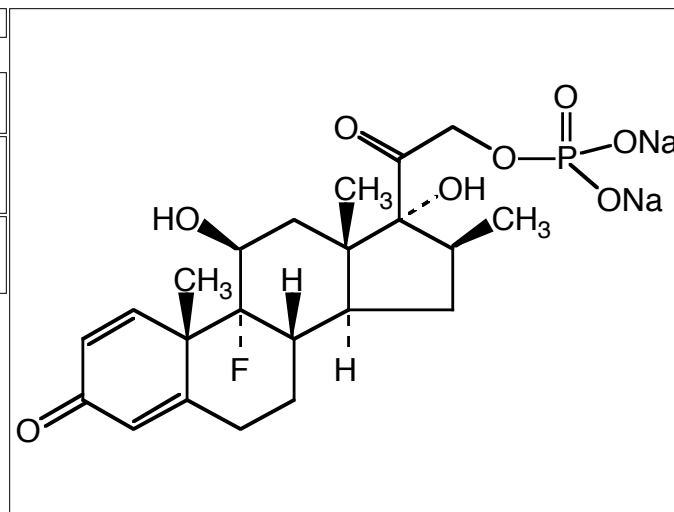




**LKT Laboratories, Inc**  
 2233 University Avenue West  
 St. Paul, Minnesota 55114 USA  
 Ph: 651.644.8424 Fax: 651.644.8357  
 www.lktlabs.com info@lktlabs.com

# Product Information

<b>CAS No.</b>	151-73-5
<b>Product ID</b>	B1878
<b>Product Name</b>	Betamethasone 21-phosphate sodium salt
<b>Chemical Name</b>	(11 $\beta$ ,16 $\beta$ )-9-Fluoro-11,17,21-trihydroxy-16-methylpregna-1,4-diene-3,20-dione 21-phosphate disodium salt
<b>Synonym</b>	Betamethasone 21-Phosphate disodium salt; Bentelan; Betnesol; Celestan; Vista-Methasone
<b>Formula</b>	C <sub>22</sub> H <sub>28</sub> FN <sub>2</sub> O <sub>8</sub> P
<b>Formula Wt.</b>	516.40
<b>Melting Point</b>	
<b>Boiling Point</b>	
<b>Purity</b>	≥98%
<b>Solubility</b>	Slightly soluble in alcohol.
<b>Stability</b>	
<b>Store Temp</b>	
<b>Ship Temp</b>	
<b>Product Description</b>	A water soluble, anti-inflammatory glucocorticoid. It has exhibited an antiulcerative effect on colonic lesions.
<b>References</b>	Kitano A, Matsumoto T, Tabata A <i>et al. Nippon Shokakibyō Gakkai Zasshi.</i> <b>90</b> :24-32 (1993). Faro CJ, Reidelberger RD, Palmer JM. <i>Am J Physiol Regul Integr Comp Physiol.</i> <b>278</b> :118-24 (2000).



## Pricing

250 mg	\$82.90
1 g	\$231.80

**Bulk quantities available upon request**

## LKT Laboratories, Inc.

Address: 2233 University Ave. W.  
 St. Paul, MN 55114  
 USA

Phone: 888-LKT-LABS (558-5227)  
 651-644-8424

Fax: 651-644-8357

Email: info@lktlabs.com

Web: www.lktlabs.com

**Caution:** This product is intended for laboratory and research use only. It is not for human or drug use.