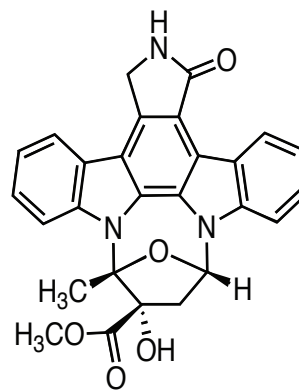


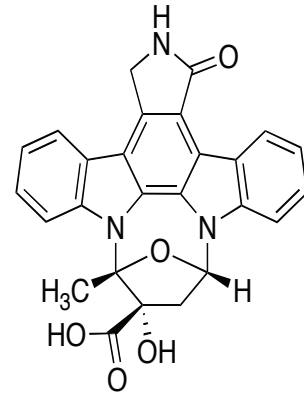
Protein Kinase Inhibitors

Nerve Growth Factor (NGF) autocrine systems are found to play an important role in the mechanisms associated with psoriasis and other hyper-proliferative skin disorders such as cancer.¹ NFG upregulates NFG mRNA in keratinocytes, which leads to keratinocyte expression of high-affinity (TrkA) NFG-receptors in epidermic basal layer. In the absence of exogenous NFG, K252 is an effective inhibitor of tyrosine kinase phosphorylation, blocking high-affinity nerve growth receptor proliferation¹.

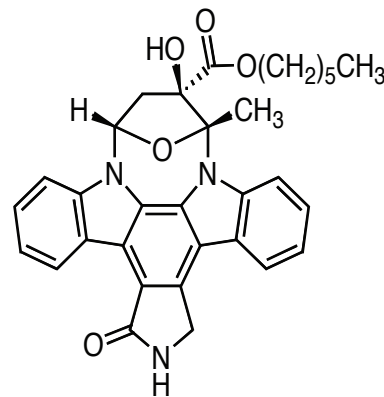
K252a is a potent protein kinase inhibitor that has shown promise fighting Met-driven proliferation of gastric carcinoma cells.^{2,3} K252b is an ectoprotein kinase inhibitor that could have profound implications on the treatment of prostate cancer.^{4,5} KT5720 is a protein kinase inhibitor that has been shown to reduce enzyme activity in INF- α , thereby creating a potential pathway to treat tumors.⁶ KT5823 is a K252 derivative. These findings suggest that K252 derivatives (by inhibiting the phosphorylation of tyrosine kinase) can potentially regulate synaptic plasticity and inhibit hyperproliferative conditions and tumors. Other compounds include Erlotinib, Lapatinib Ditosylate, Nilotinib, Sorafenib, Sunitinib Malate, and Vatalanib Dihydrochloride.



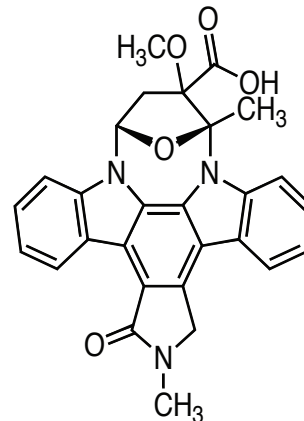
K252a



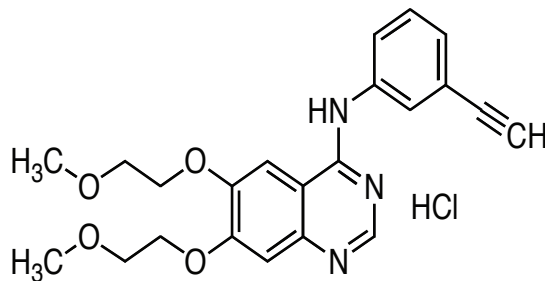
K252b



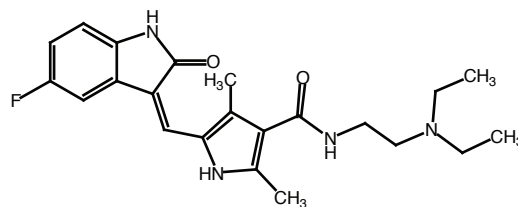
KT5720



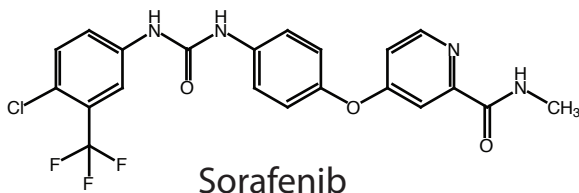
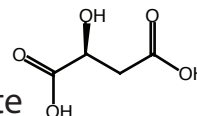
KT5823



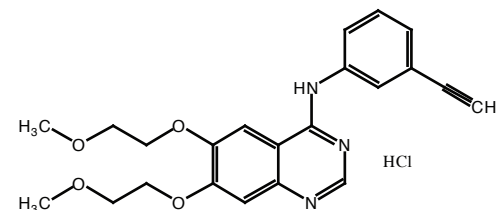
Erlotinib



Sunitinib Malate



Sorafenib



Erlotinib

1. Pincelli C, Marconi A. *J Dermatol Sci.* 22: 71-9 (2000).
2. Alessandro M, Silvia M, Paolo A, Emma T, Carola P, *Oncogene*, 21(32): 4885-4893 (2002).
3. Tapley P, Lamballe F, Barbacid M. *Oncogene*. 7(2):371-81 (1992).
4. Ellen M-C, Kita T, Shih W, Dipaola R, *Chin K Clinical Cancer Research*. 6: 2309-2317 (2000).
5. Teshima et. al. *Journal of immunology*, 159(2): 964-969 (1997).
6. Naviglio et. al. *J Interferon Cytokine Res.* 27(2):1 (2007).

